



Brockenhurst College



INTERNATIONAL PROSPECTUS 2026

WELCOME FROM THE PRINCIPAL AND CEO



Our Professional Services teams, including dedicated Careers Advisors, are also on hand to guide your journey here at Brock.

Importantly, you can make new, long-lasting friendships and gain an authentic insight into British life by living with an English-speaking family.

Whatever programme you choose to study, we will work with you to ensure you enjoy an engaging, inspiring, and meaningful learning experience that builds a strong platform for future success.

We hope you enjoy reading our prospectus, and please contact our International team if you have any questions. We look forward to welcoming you as a student at Brockenhurst College in the near future.

Helen Odhams
Principal and CEO

Here at Brockenhurst College we welcome students from all over the world. Our broad international outlook, strong record of academic success, and picturesque setting in the New Forest National Park make the College a welcoming and unique place to study.

As an international student, you will have the opportunity to enjoy all aspects of student life. This includes benefitting from the expertise of our specialist teachers and support staff.

Alongside this, you can explore a wide range of enriching activities that will help you develop the wider skills and qualities you will need to be successful in the future.

STUDENTS' UNION



Hello, I am Milo Bond, the Students' Union President, and I'm happy to welcome you to Brockenhurst College.

Brock is a great place with a real variety of people, and there are all kinds of opportunities available to you. Student life here is good: there are clubs, sports, societies, a student-run college newspaper and plenty of ways to bond with new people. And I'm loving the subjects I selected. From my experience, I would say it's a lot easier to get into a subject when it's one you have chosen yourself.

All my teachers have been great too, they are really in touch with their subject's relevance in the real world and it's great that they pass this insight on to you. All of this makes your lessons really engaging and helps bring learning to life.

As the Students' Union President, I want to let you know that you will have support from the Union while you are at Brock. Whether you want to join the Union as an International Officer, or you need help setting up a club, we are here. We will also be available to support you in making the most of your time, and to help shape your college experience for the better.

So again, welcome. And remember, the Union is always here should you need us.

CONTENTS

International success	4	High School Experience and school courses
How we support you as an individual	6	High School Experience
Top reasons to choose Brock	8	Spring, Summer and Winter School Courses... 26
Location.....	10	Sixth Form
Brock Campus	12	A Level / A Level equivalent courses
Homestay accommodation	14	Vocational courses.....
Brock-Extra and Clubs & Societies	15	Application process.....
Sports Academy	16	Fees, scholarships and visas
Performing Arts & Music Academy.....	17	Contact us
Aspire Academy	18	
STEM Academy	19	
Your Learning	20	
Our Staff.....	21	
Progression.....	22	
Elite support programme.....	23	



8



25



31

An overview of the British education system:

Ages	Stages	Exams	
3 – 5	Pre-school	–	Primary
5 – 7	Key Stage 1 Year 1 – 2	–	
7 – 11	Key Stage 2 Year 3 – 6	National Tests	
11 – 14	Key Stage 3 Year 7 – 9	–	Secondary
14 – 16	Key Stage 4 Year 10 – 11	GCSEs Level 2 Qualifications Vocational Qualifications	
16 – 18	Key Stage 5 Year 12 – 13	AS/A Levels Level 3 Qualifications Vocational Qualifications Foundation Year	
18+	Level 4 – 6	Higher National Diploma Undergraduate Degrees	Higher Education
21+	Level 7 – 8	Postgraduate Degrees Doctoral Degrees	

INTERNATIONAL SUCCESS

Over three quarters of our international students who progressed to university in the UK went to institutions ranked in the top 20[†]. Successful completion of our courses may enable you to study at one of our partner universities. These include the University of Reading, Kingston University London, Bournemouth University and the University of Southampton.

[†]Times Higher Education UK university rankings 2025.



"After completing a two-year A Level course I can say with certainty that Brockenhurst College is a superb choice for those who strive for excellence. Brock offers all the necessary facilities and learning equipment for students to achieve the best grades possible and to create a positive and friendly environment. With the outstanding work and dedication of my tutors I was able to achieve high grades in my subjects, which helped me secure a place to study Law at the University of Exeter."

Balint Garamvolgyi from Hungary.
A Levels studied: Business, History, Law. GCSE Chinese.



"What I love most about Brockenhurst is the variety of extracurricular activities you can choose from. In my first year, I joined the student ambassador team, helping with college events and tours. In my second year, I booked a role in the college musical production and got to work with so many talented people. After coming to Brock for a year and deciding to expand my stay for a second year, I am now in the process of applying to university in England with the help of the college. The end of my second year won't just be the end of an amazing experience but the start of an even more incredible one, and I have to thank Brockenhurst College for making it possible."

Rosa Festini from Italy.
A Levels studied: Drama and Theatre, Politics, Psychology.



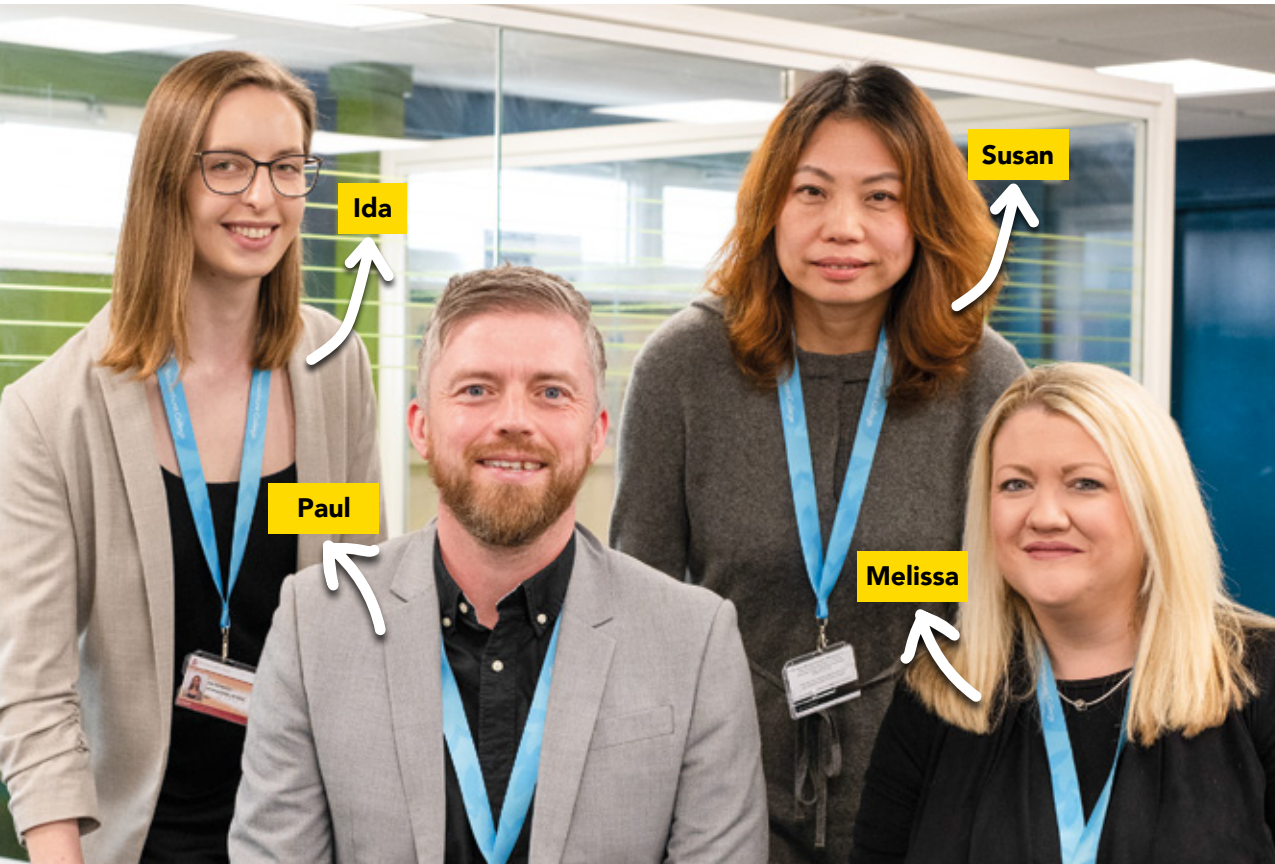
"When I first came to Brock, I was really nervous about what to expect and how to get around. Luckily, the college offered all the support I needed, which came especially from the international office and my subject teachers. It's not easy being so far away from home, but everyone here is more than willing to help me with anything."

One thing I loved from the start was the wide variety of subjects and activities I could choose from, as well as the ability to change my timetable to suit me better. Even though the teaching system here is different from the one in Czechia, I adapted easily thanks to the amount of time we are given for independent study."

Kordula Slamova from Czechia.
A Levels studied: Biology, Chemistry and English Language and Literature.



HOW WE SUPPORT YOU AS AN INDIVIDUAL



Ida Reinholt
International Officer

"I recruit international students to the college, travelling abroad to meet with students, agents and parents. I also help support our current students here on campus. I'm originally from Norway and came to the UK as an international student. Having experienced the benefits of studying abroad myself, I'm passionate about helping our students have a great time at Brock."

Paul Spanner
International Manager

"I'm passionate about Brock and about the beautiful New Forest, where we are lucky enough to live and work. I regularly travel overseas to meet with students, parents, education agents and schools to talk about the benefits of an education with us. My team and I genuinely care about each and every one of you, and the first-class support we provide has helped many international students into world-class universities."

Susan Sun
Director of Brock China Office

"With more than 20 years of experience helping Chinese students study abroad, I am very passionate about recruiting students to study at Brock. As a leading state college in the UK, Brock has so many great resources to offer. I am also very pleased to be able to support the Chinese students on the Elite programme and guide them to use the College's resources, achieve their best and further their education at their dream university."

Melissa Murphy
Senior International Officer

"My role is to recruit international students from around the world to study at Brock, carefully taking into consideration their future plans and progression opportunities. I spend time overseas meeting with students, parents and agents in different countries to further the College's vision for internationalisation. I look forward to seeing you around campus."

Jo Buttle
International Administration and Accommodation Officer

"One of my key roles is to arrange Homestay placements and make sure our students have all the support and guidance they need while studying at Brock. I'm dedicated to making sure the student experience is a safe and happy one."

Samantha Ettle
International Student Experience Officer

"I'm responsible for ensuring the welfare of our international students, as well as helping them have the best possible experience at Brock. Having lived overseas, I understand the challenges of life in a new country, but I also know it will leave you with lots of great memories. I will arrange your host family placement and will meet you in tutorials or the International office to help you with any problems. I also support our international Chinese students on the Elite Programme to achieve their potential."

Xing Li
Transnational Education Manager and Confucius Classroom Manager

"It has been my great honour to see how Brock has helped hundreds of international students. My current responsibilities are to send Brock teaching and learning specialists to other countries so the students at our overseas partner organisations can benefit from our services without travelling to the UK."

LOCATION

The UK is well known around the world for its wealth of different communities, historical landmarks and world-class cultural events. Here in the South you can enjoy a mix of cosmopolitan cities, country villages, and the New Forest National Park with its ancient woodland and free-roaming ponies, donkeys and cattle.

Our 36-acre campus is on the coastal side of the New Forest, and is a friendly, safe and peaceful environment in which to learn. Brockenhurst village is a five-minute walk away and has a mainline train station, enabling you to travel to London in under two hours.

Fifteen minutes away by train is the Russell Group university city of Southampton, which is also one of the largest shopping destinations in the region. In the opposite direction is the famous seaside resort town of Bournemouth.

Travel and transport

Travelling to the College is easy thanks to excellent transport links. Importantly, we try to ensure all host families live close to public transport routes.

Southampton and Bournemouth both have international airports serving European destinations, plus cross-channel ferries run from Poole and Portsmouth.



1. Brockenhurst village



2. View from London Eye



3. Bournemouth beach



4. University of Oxford



5. The Bargate, Southampton

90 MINS

To London or Oxford by train

15 MINS

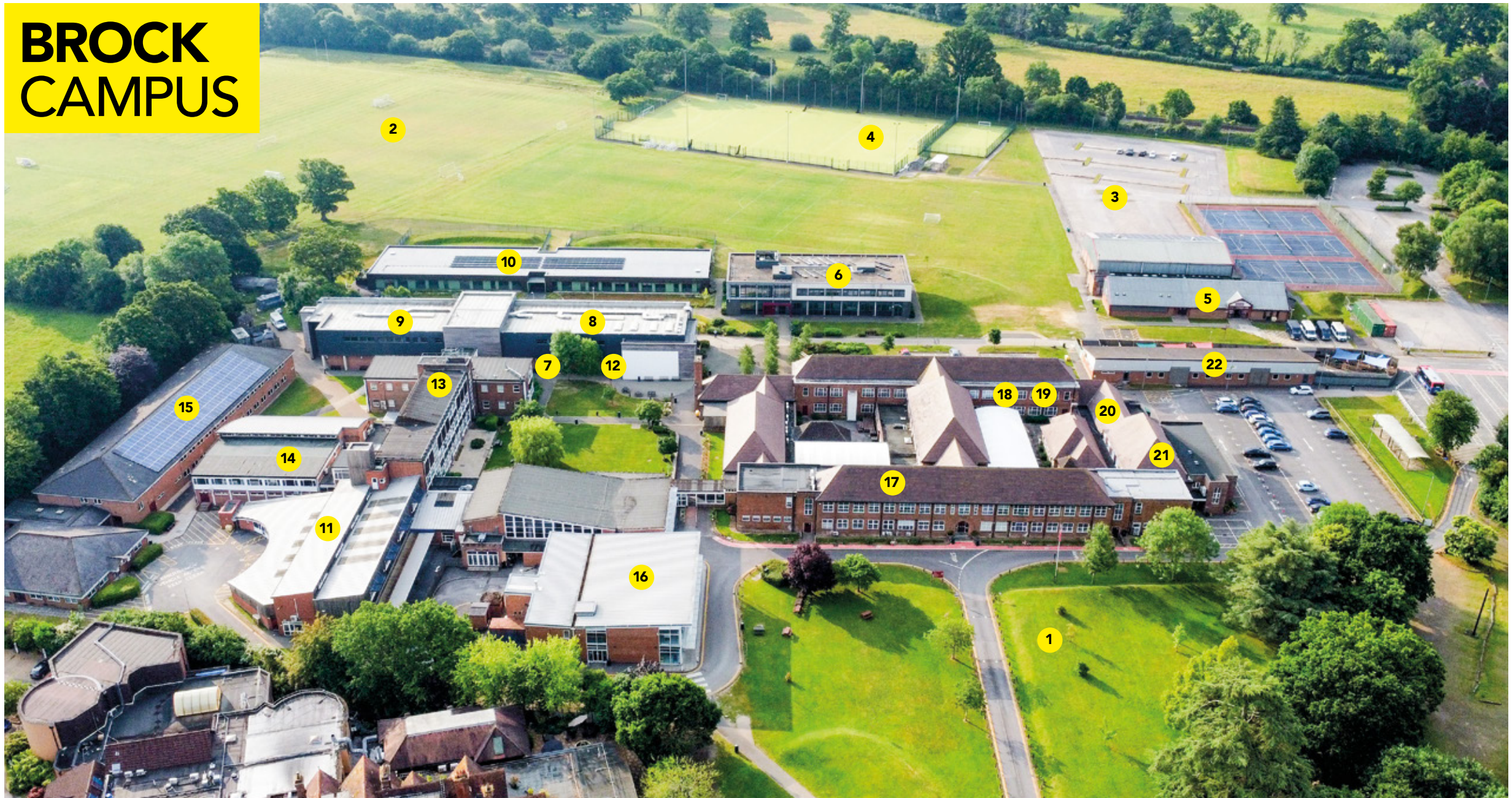
By train to Southampton and to the famous seaside town of Bournemouth

7 MINS

Walking time from train station to Brock



BROCK CAMPUS



- 1** Thirty-six-acre campus in the New Forest National Park.
- 2** Twenty-seven acres of playing fields.
- 3** Over 300 student car parking spaces.
- 4** All-weather 4G AstroTurf pitch for football.
- 5** Fully-equipped Sports Centre with Gym and Fitness Suite.
- 6** STEM Centre packed with the latest learning technology.

- 7** Engineering Workshops with industry-standard equipment.
- 8** Computing and IT labs with Cisco Systems input.
- 9** Photographic Studio including dark room.
- 10** Foundation and Independence Hub.
- 11** Visual Arts Hub with separate areas for each specialism.
- 12** Industry-standard training kitchens and fine-dining restaurant.

- 13** Newly refurbished science laboratories set up for a range of experiments.
- 14** Brock Hub, run by trained and experienced staff, featuring group study rooms and personal workspaces.
- 15** Specialised classrooms for English, humanities, modern languages and childcare courses.
- 16** Hard Brock Café open all day for food, drink and socialising.
- 17** Business and IT Suites.

- 18** Reflections Room for quiet contemplation and prayer.
- 19** International office.
- 20** Recording Studio with industry-standard hardware and software.
- 21** One-hundred seat Kemball Theatre available for all kinds of performances.
- 22** Highwood Nursery open to our college community and public.

HOMESTAY ACCOMMODATION

When you arrive in the UK, you will be welcomed into your new home and, importantly, be treated as a member of the family.

Homestay accommodation is available to all international students and is organised by the College's International office. You will live with a local host family and gain an authentic insight into British life. All our hosts are selected carefully and their homes are inspected regularly.

Homestay accommodation provides:

- A traditional, English-speaking home environment.
- A private, furnished room.
- Two meals a day and three meals a day during weekends and holidays.
- Internet access.
- Travel pass, where applicable.*
- Laundry opportunities once or twice a week.
- Proximity to the College based on a commute time of 15 minutes to 1 hour.
- Very few additional living costs.

Your Homestay host will give you advice about staying healthy and safe while you gradually become more independent. You will be able to call them at any time for support, plus there is a 24-hour College Helpline in case of emergencies. Your Homestay host can also provide reassurance about your progress to your parents.

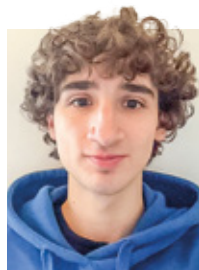
*Your travel pass is not normally available until after your induction week.



"Stepping into my host mother's home was like entering a warm embrace. She exudes a gentle wisdom and kindness that instantly put me at ease. From day one, she made sure that I felt comfortable in my new living area. Every little detail she took

care of, whether it was arranging my room or offering help whenever I needed it showing how much she truly cared as if I was her daughter. No matter how my day went, sitting down at the table and enjoying her meal brought me a sense of comfort and serenity. The meal wasn't just flavourful; it was made with care, which made it feel like home every single evening. Those dinner conversations I shared with her over the tasty meals were the moments I cherished the most. It has been a once-in-a-lifetime experience with unforgettable memories."

Wendy Nguyen from Vietnam.
A Levels studied: Mathematics, Biology, Chemistry.



"One of the best parts of my experience at Brockenhurst College has been living with a host family. From the very first day, they welcomed me warmly, were incredibly supportive, always available if I had any questions or issues, and they made a genuine effort to include me in their activities. For instance, they invited me to join them for football games and other outings, making me feel like a part of their family and giving me memorable experiences outside of my studies. Their home was not only clean and comfortable but also conveniently close to the college, making my daily commute easy. It's also a great way to improve your English and get to know the English culture."

Riccardo Corti from Italy.
A Levels studied: Mathematics, Further Mathematics, Physics, Computer Science.



SCAN FOR MORE INFORMATION



BROCK-EXTRA AND CLUBS & SOCIETIES



Brock-Extra and Clubs & Societies are two separate initiatives designed to help you get even more out of college. You will choose your options at Enrolment from a wide range of activities. These will then be timetabled as part of your Study Programme.

Brock-Extra

Brock-Extra sessions focus on helping you gain new knowledge and skills, independent of your subject(s). Evidence of Brock-Extra success will then give you a more complete learner profile, which will support your UCAS or job applications. For example, by selecting the Extended Project Qualification option, you can explore an area of personal interest and obtain additional UCAS points.

Clubs & Societies

Clubs & Societies sessions are designed to support your overall development by enabling you to follow your interests alongside likeminded people. This typically means a welcome break from your formal studies, which is beneficial. It also represents a prime opportunity to make new friends. As with Brock-Extra, these activities can boost your academic and personal profile ahead of applying for your next steps.



SPORTS ACADEMY



SCAN FOR MORE INFORMATION

You can continue playing the sports you love and develop as an athlete by joining our Sports Academy, where you will benefit from regular coaching, training and competition.

All training and competing will be scheduled so it does not clash with your studies. We currently run academies in basketball, football, netball and rugby, enabling you to enjoy sport alongside your studies. You will train twice a week and represent Brock in county, regional and national events, giving you the constant thrill of hard-fought competition. In 2025 our women's football academy players won gold at national college championships.

"Being part of the football team in England has been an incredible experience. Training with players from different countries and cultures has helped me grow both as a person and as a footballer. Playing in England makes me happy representing my country while abroad and gives me different opportunities meeting new people while playing against different teams which gives me a different experience."

Cristobal Lagos from Chile.
Studying: A Level Business, A Level Economics, Sport and Exercise Science Level 3 Foundation Diploma.



AFC Bournemouth Female Elite Player Programme

We work with AFC Bournemouth so women's footballers can combine academic studies with a comprehensive football education programme. The Female Elite Player Programme will allow you to access high-quality coaching, with a range of sessions available each day, plus regular Wednesday fixtures.

Meanwhile, your academic curriculum will be tailored to match your ambitions, with a range of A Levels and Vocational courses on offer.

PERFORMING ARTS & MUSIC ACADEMY



SCAN FOR MORE INFORMATION

Our Performing Arts and Music Academy gives you even more opportunities to develop your talents in music, dance, acting and singing. You will also be able to improve your overall performance skills alongside likeminded people who will help you make the step up to professional or semi-professional level.

Becoming part of the academy means...

You will have plenty of opportunities to gain additional performance experience through college productions. You can also choose to work for the College's Marketing department as a Student Ambassador. Both options will give you valuable material for your growing CV.

These include:

- Backstage tours of West End theatres and opera houses, followed by viewings.
- New York, where you will watch musicals on Broadway and take part in performance workshops.
- Local theatres, where you will see the latest plays, musicals, concerts and dance productions.

Extra activities

We run a series of performance-related trips designed to inspire you and help you learn from others.



"The College production was my highlight of first year – it was a fantastic opportunity for me to make new friends, gain new skills and enjoy my time onstage, performing to a public audience with an immensely talented group of people."

Olli Webb
Studied: Music Level 3, English Literature A Level.

ASPIRE ACADEMY

Our Aspire Academy will nurture your talents and develop your abilities, giving you the best chance of fulfilling your potential. You will also benefit from university outreach initiatives, field trips, specialist Brock-Extra opportunities, summer school options and intercollege competitions.

As an Aspire student, you will work with your Aspire Tutor to develop a bespoke Study Programme that will enable you to grow into the learner and ultimately the professional you want to become. Importantly, you will have opportunities to participate in supra-curricular activities designed to enhance your abilities and support you in your quest for success.

Naturally, it helps if you know what you are aiming to achieve. However, many learners prefer to keep their options open at Further Education level. Therefore, do not worry if you are still undecided. We will help you develop that all-important sense of vision for your future.



“The teachers and staff at Brock are exceptionally knowledgeable and supportive. Their encouragement and hands-on assistance helped me quickly adapt to a new academic environment, making a challenging transition feel seamless. They also encourage me to participate in various extra-curricular activities, which boosted my academic and personal growth through valuable experiences. The Aspire programme greatly eased my university application process, providing me with valuable insights and resources.”

Viet Thang Hoang from Vietnam
A Levels studying: Computer Science, Further Maths, Maths, Physics.

STEP and AEA Maths support

We provide individual and small group support to students wishing to sit STEP, AEA and other special exams. Support will involve taught sessions in the lead-up to exams, as well as access to a range of practice materials and other resources on our e-learning website.

If you are studying Maths, you will be given access to a wide range of support materials through the Further Maths Support programme and Integral Maths website.

Extended Project Qualification (EPQ)

The EPQ gives you the opportunity to research an area of your choice beyond your A Level courses. It is equivalent to one AS Level (UCAS points) and can be studied in your second year.

You will develop your academic skills through the process of planning and refining your research to make a final presentation. Your project can be either a research project or an artefact such as a piece of music or a film script.

You will be taught and mentored in small groups. Every year students complete scientific and social science-based projects. Past projects have included: The impact of pesticides on bee populations; Is the NHS being privatised by stealth?; Existentialism in the work of Dostoevsky; Women in Victorian society.



SCAN FOR MORE INFORMATION



SCAN FOR MORE INFORMATION

STEM ACADEMY

At Brockenhurst College we have a history of strong results across the STEM subjects. So, if you want to gain added support for your STEM learning, then come and join our STEM Academy.

What are the advantages?

Our STEM Academy is designed to support students studying Science, Technology, Engineering and Maths (STEM), and promote high achievement.

If you are considering a career in science, engineering, medicine, veterinary science, or any other STEM-related area, then this extra learning opportunity is definitely one for you.

Special activities

Being part of our STEM Academy means you will have the chance to participate in extra activities including competitions, trips and talks by visiting speakers.

Here are some examples of recent opportunities:

- British Science Week, featuring a range of visiting speakers.
- Community volunteer programme for medics and vets.
- Educational trips to Iceland, Switzerland (CERN) and elsewhere.
- Physics and Biology Challenges and Olympiads.
- Subject conferences and masterclasses.
- Support with special papers like BMAT, MAT and STEP.
- UK Senior Maths Challenge (individual and team) and Olympiad.
- University of Southampton Ambassadors programme.



“Brock is the only FE college locally that offers Geology at A Level, which is a big reason why I decided to study here. Also, Britain is well-known for having excellent university programmes for aspiring geologists. Geohazards such as earthquakes and volcanic eruptions are my main interest, but I’m also interested in mineral formations. My teacher is incredible at helping me understand.”


Idana Valeria Elías from Chile.

A Levels studied: Geology, Biology, Chemistry, FCSE Chinese.
Now studying: BSc Geology at Royal Holloway, University of London.

YOUR LEARNING


Your Study Programme and our approach to learning work together to give you the study skills and support you need to get the most out of college.

You will create an individual Study Programme that will serve as your overarching strategy for success. Your Study Programme will comprise:




1 LESSONS

Depending on your course, you will receive between 16 and 20 hours of timetabled lessons a week. This will include English language classes to help support your UK learning experience.




2 DOUBLEUP

Timetabled DOUBLEUP sessions enhance and extend your learning beyond the classroom. In order to be successful, you need to DOUBLEUP on your class time with guided independent study.




3 ACADEMIC TUTOR

You will meet weekly for a timetabled hour with your Academic Tutor. They will be responsible for your pastoral support and progress. Regular international tutorials will also be timetabled, giving you access to specialist guidance.




4 NEXT STEPS

Next Steps events will be held from the start of your time at Brock. There will be opportunities to visit universities and attend our Higher Education Fair on campus, which is attended by representatives of around 70 universities.



5 BROCK-EXTRA AND CLUBS & SOCIETIES

There are over 80 opportunities to help you get more out of college life. These can help boost your UCAS application and growing CV by evidencing your strong and determined character.



6 EXTRA ACTIVITIES

You can become involved in a combination of extra activities to help you get ahead. For example, you can:

- Join an academy.
- Take part in volunteering.
- Become a Student Ambassador.
- Obtain a work placement.

Transitioning to the UK

Moving from an overseas school to Brock is an exciting moment in your life. Straight away you will notice that being at college is very different to being at school. But don't worry, because staff here at Brock are focussed on supporting you to make the best possible transition to our caring college community. They will support you to become an able, curious, independent learner, with all the attributes you need to be successful in your studies. Importantly, their commitment to you and their ambition for your future will enable you to plan your successful progression to university or employment.

Timetable example (Level 3 Study Programme)

	Monday	Tuesday	Wednesday	Thursday	Friday
9:00am – 10:30am	Psychology	DOUBLEUP	ESOL	Maths	Psychology
10:30am – 10:50am	Break				
10:50am – 12:20pm	History	Study Period	Psychology	DOUBLEUP	Maths
12:20pm – 1:10pm	Lunch and Clubs & Societies				
1:10pm – 2:40pm	ESOL	History	DOUBLEUP	History	DOUBLEUP
2:40pm – 2:50pm	Lesson changeover				
2:50pm – 4:20pm	Study Period	Maths	Brock-Extra EPQ	Tutor Time	Study Period



Gloria Idowu, Engineering teacher.

What is the best part of your job?

"Interacting with my students is by far the best part of my job. Building relationships, building confidence, and building a rapport with them, brings me immense joy. I might be their teacher, but I also learn a lot from them too."

What makes Brock special to you?

"Brock is a welcoming, friendly and inclusive setting, where everyone is encouraged and supported to reach their full potential. As an educator, I adore this culture. It brings out the best in everyone."

What advice would you give to new students?

"Open your heart to learning, would be my first piece of advice. Then, it's all about embracing opportunities, making new friends, and forging productive relationships. Also, try not to be too apprehensive. We certainly don't expect you to reach your full potential on day one."

How do you support your students' next steps?

"I always encourage my students to be true to themselves and follow their dreams. This means enabling them to do their best in every single task, and also not allowing them to be discouraged by minor setbacks. Ultimately, they're going to leave with new knowledge and skills that will set them up for success in the jobs market."

OUR STAFF

Our teachers are experts in their subjects and specialists in 16–19 education. Meanwhile, all our Vocational course teachers have relevant industry experience as well. Each teacher is committed to implementing a range of learning strategies to keep you motivated and inspired. Thanks to this support you can explore your syllabus in depth, respond with sophisticated ideas, and ultimately translate your learning into success.

Eoin Brophy, English teacher.

What is the best part of your job?

"I love the satisfaction I get from inspiring young people to grasp, analyse and criticise sophisticated concepts associated with contemporary discourse. Ideas and messages, plus systems of power, all go into the analytical mix to help them decode and understand today's world."

What makes Brock special to you?

"For me, it's all about the way Brock strikes an ideal balance between continuous support and independence, while also prioritising inclusivity and respect. The vibe on campus is always upbeat, and this is complemented by a rich diversity of individual identities, making it an inspiring place to be."

What advice would you give to new students?

"My advice is to be true to yourself and follow your interests. If you're interested in something, then you'll enjoy it – it's as simple as that. What's more, you're probably good at it. Remember, what comes naturally to you doesn't necessarily come naturally to others. It could well be a specialist talent that helps define you as unique."

How do you support your students' next steps?

"I always encourage students to have one eye on their next steps. This doesn't have to feel overwhelming because they all have the luxury of time. I might casually introduce undergraduate texts to my classes, or I might present the findings of academic research. The response is always positive."



PROGRESSION

A UK education is recognised by many employers, universities and governments around the world as an indication of quality in a young person. Studying with us will give you the knowledge and skills on which you can build for success in the future, as well as an authentic British experience.



Secure a place at a top university

Most of our international students who remain in the UK for university progress to top ranked universities. These include University of Bristol, The University of Manchester, University of Exeter, The University of Sheffield, University College London, Imperial College London, University of Southampton, Durham University and University of Liverpool.

Partner universities

We have close links to University of Reading, which is home to the renowned Henley Business School. Other partners include Kingston University London, Bournemouth University and University of Southampton. Successful completion of some of our courses may enable you to progress directly to these institutions.

What is the Russell Group?

The Russell Group is an internationally recognised association of 24 prestigious British public research universities, which are well known for their academic excellence and selective admissions. They include: University College London, Imperial College London, University of Nottingham and University of Southampton.

Quality information, advice and guidance

Here at Brock we are proud to hold TWO prestigious quality standards for the information, advice and guidance we provide to our students. This package of support empowers learners to make informed choices about their next steps after college. We have held the Matrix Quality Standard since 2004, and in 2022 we were very pleased to add the Quality in Careers Standard. Both these awards were achieved in full following a rigorous validation process that included continuous external assessments.

Quality assurance for Higher Education

We have been endorsed by the Quality Assurance Agency, which examines how well UK educational institutions maintain standards in Higher Education.

ELITE SUPPORT PROGRAMME

The Elite Support programme is a specialist added-value service that is designed to help ensure you achieve your potential. It is a total-care package that provides an extra layer of support and encouragement to enable you to adapt to the UK education system smoothly. You may choose to participate in the programme for one or two years.

On our Elite Support programme you will benefit from the following:

- A specialist Elite Tutor to focus on your academic needs.
- Access to additional academic support outside normal college hours.
- Regular written feedback to your parents on your performance and attendance.
- A termly video link update for your parents.
- Frequent progress reviews and constant monitoring by your Elite Tutor.
- Educational visits and seminars to boost your university prospects.
- Extra pastoral care from dedicated officers.
- Access to our Aspire programme to help you aim for places at top universities.

Elite Support fees are payable in addition to the standard course fees.

AGE: 16+

COURSE DURATION:

one – two years (alongside A Level)

START DATE:

September 2026 (alongside A Level)

HOURS PER WEEK:

1.5 hours of tutorials plus out-of-hours support

TUITION FEES:

£7,000 alongside A Level (one year)



“The Elite Support programme feels like a family. Whenever I have any problems, the tutors are always ready to help. The extra help makes me fully understand the College information and I joined the Duke of Edinburgh programme under the guidance of the tutors. I hope that with the support of the Elite Support programme I will achieve the best that I can.”

Anthony Sun from China. A Level and Elite Support programme.

HIGH SCHOOL EXPERIENCE

The High School Experience is a flexible, short-stay learning experience through which you can choose to stay with the College for a term, two terms or a term and a half.*

Students usually choose three academic subjects from a wide variety of options, which will be supplemented by specialised English classes. International students undertaking the High School Experience will participate in lessons alongside British students completing their A Level studies, meaning they will benefit from fully immersing themselves in British culture. As a student you can also participate in various extra activities and benefit from the College's Brock-Extra and Clubs & Societies programme.

All High School Experience students stay with our Homestay hosts, located in the area between Brockenhurst and Bournemouth. A private room, half-board over the week and full-board over the weekend, plus free days and a travel pass, will be provided for every student. An academic transcript with feedback from teachers and confirmation of studies will be provided at the end of this programme.

Visit our website www.brock.ac.uk/international for more details. *Ask us about the possibility of a shorter stay.

AGE: 16 – 19

COURSE DURATION:
One week – One year

START DATE:
September 2026 or January 2027

HOURS PER WEEK: 15 – 20 hours

ENTRY REQUIREMENTS:
Entry is by interview. We normally expect:

- Good track record of academic study
- Good conversational level of English

QUALIFICATIONS GAINED:
Brockenhurst College Attendance Certificate



Tuition fees

AUTUMN TERM Sept 2026 – Dec 2026	£5,750
SEMESTER Sept 2026 – Feb 2027 Half Term Jan 2027 – May 2027 Half Term Feb 2027 – July 2027	£7,250
SPRING TERM Jan 2027 – Easter 2027	£5,500
SPRING & SUMMER TERM Jan 2027 – July 2027	£8,250

Tuition fees and accommodation package

AUTUMN TERM Sept 2026 – Dec 2026	£9,750
SEMESTER Sept 2026 – Feb 2027 Half Term Jan 2027 – May 2027 Half Term Feb 2027 – July 2027	£12,500
SPRING TERM Jan 2027 – Easter 2027	£8,750
SPRING & SUMMER TERM Jan 2027 – July 2027	£14,500

You may also join the High School Experience for a full academic year, or even a full two-year A Level programme, and come away with external qualifications. See pages 32-33 for more information on the full A Level programme.



SPRING, SUMMER AND WINTER SCHOOL COURSES

Our Spring, Summer and Winter School courses give you an authentic British cultural and study experience during your school break. You will participate in a range of classes, activities and trips to improve your English language skills over a period of one to four weeks.

We offer a range of options for students, from traditional summer and winter schools (English language plus cultural trips and activities) to full 'immersion' courses (studying in academic classes alongside UK students).

AGE: 12+ (depending on course)

COURSE DURATION: 1 – 4 weeks

START DATE:
Various start dates in Spring, Summer and Winter.

HOURS PER WEEK:
15 hours per week of English, plus activities or specialist classes depending on your course.

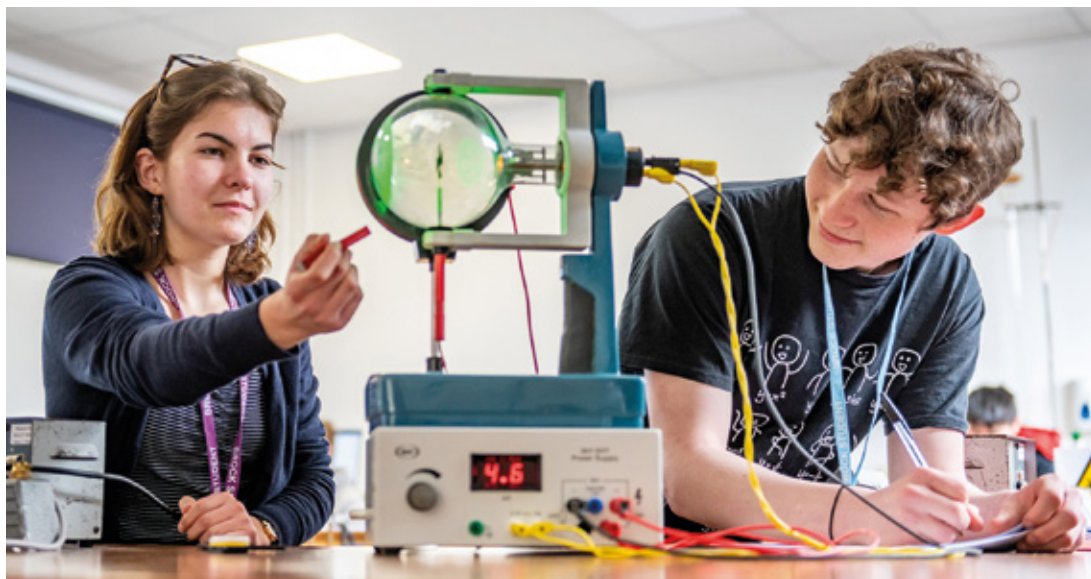
ENGLISH LANGUAGE REQUIREMENT:
A good conversational level of English.

QUALIFICATIONS GAINED:
Brockenhurst College Certificate.

TUITION FEE:
Fees vary depending on the programme, but will include full-board accommodation, daily transport and excursions. Contact us for a quotation.

"Brock offers a great environment to learn, have fun and make friends. Before joining Brock I wasn't sure about continuing my studies in England, but now I know that I am able to. All teachers were friendly and willing to help at any time."

Susie Yang from China.



A LEVEL / A LEVEL EQUIVALENT COURSES

A Levels are internationally recognised advanced qualifications for university entry. To achieve a full A Level you will need to pass examinations at the end of your second year of study. Some subjects offer you the opportunity to achieve an AS Level certificate at the end of your first year.

If you have enjoyed your junior high school or secondary study (GCSE equivalent), A Levels will build on your existing knowledge and understanding. Three A Levels are a requirement for most universities in the UK and around the world, although you can take four.

Choose any combination from over 45 subjects:

- Animation
- Biology
- Business
- Chemistry
- Classical Civilisation
- Computer Science
- Criminology
- Dance
- Drama and Theatre
- Economics
- Electronics
- English Language
- English Language and Literature
- English Literature
- Enterprise and Entrepreneurship
- Environmental Science
- Fashion and Textiles
- Film Studies
- Fine Art
- French
- Geography
- Geology
- Graphics and Illustration
- History
- Human Biology
- Information Technology
- Law
- Law (Applied)
- Mathematics
- Mathematics (Further)
- Mathematics (Core)
- Media Studies
- Music
- Music Production
- Performing Arts
- Philosophy
- Photography
- Physics
- Politics
- Product Design
- Production Arts
- Psychology
- Sociology
- Spanish
- Sport and Exercise Science

You normally choose three subjects to study over two years. You may also choose to study your native language as an additional subject if it is available.

ESOL classes – English for Speakers of other Languages

In addition to your A Level subjects, you will receive complementary English language classes. These classes run alongside your other subjects to support you throughout the year.

In-sessional Enhancement English Language Course

If you need more support, or if you are aiming for a university with high English entry requirements, this course provides additional language and study skills tuition.

It will run alongside your A Level or Vocational course throughout the year (in addition to your English language classes) to give you increased language and study skills support.

The tuition fee is £3,500 per year.



“Brock offers a wide range of classes so everybody can choose what they are interested in. To be able to choose subjects based on my interests and my future university studies is a big advantage. Every teacher cares about me and gives me advice. During my ESOL classes I learn a lot, which helps me academically.”

Hinano Tsutsui from Japan.
A Levels studied: Philosophy, Psychology.

AGE: 16+

COURSE DURATION:
Two years (three terms per year)

START DATE: September 2026

HOURS PER WEEK:
Approximately four-and-a-half hours per week for each A Level subject, plus an equal amount of self-study.
Three hours per week English Language (ESOL) support for all students until you achieve IELTS 6.5.

ACADEMIC REQUIREMENTS:
You should have completed at least one year of senior high or secondary school with a good level of attainment. We will require your past two years of academic reports.

ENGLISH LANGUAGE REQUIREMENT:
IELTS 5.0 overall with no band below 5.0 or equivalent UKVI-approved English Language certificate.
Students with a high academic performance but with an overall IELTS score of below 5.0 may be offered the opportunity to join one of our English support courses, which will allow them to meet our English entry requirements.

ASSESSMENT METHOD:
Students are assessed by GCE Advanced Level examinations. Some subjects require coursework assessments as well.

QUALIFICATIONS GAINED:
Typically three full A Levels.

TUITION FEE: £12,500 per academic year

VOCATIONAL COURSES

An alternative to A Levels with a more practical focus. Vocational courses help you develop the knowledge and skills to work in a specific job or trade. They lead to internationally recognised qualifications and can open doors to employment or university.

If you have done well in your GCSE (or equivalent) studies and wish to begin a practical course, our two-year Vocational programme is designed to prepare you for the career you want.

Importantly, these courses respond to the specific needs of employers and enable you to progress to university. You will be taught to develop practical and theoretical skills, and will have the chance to complete a work placement. Also, you will be assessed mainly through assignments rather than exams.

We offer courses in the following subject areas:

- Art and Design
- Business
- Engineering
- Health and Social Care
- Information Technology
- Media
- Music
- Performing Arts
- Professional Photography
- Sport and Exercise Science
- Sport
- Travel and Tourism
- Uniformed Protective Services



"I am currently studying Level 3 Performing Arts. I am very happy with my programme. We do many different units during the year that are really interesting. My main focusses are dance, acting and singing. I think this course can fully prepare students for their future whether they decide to continue with their education or decide to find a job afterwards."

Ivana Andrejkova from Slovakia.
Vocational course studied: Performing Arts.



ESOL classes – English for Speakers of other Languages

As well as your main studies, you will receive complementary English language classes. These classes run alongside your other subjects to support you throughout the year.

In-session Enhancement English Language course

If you need more support, or if you are aiming for a university with strict English Language entry requirements, this course will provide additional language and study skills to enable you to meet your objectives. (see page 29 for more details).

By completing the two-year programme successfully, you will be awarded a Level 3 Extended Diploma (equivalent to three A Levels).

In 2025, students who completed Vocational courses entered professions such as hospitality management, social work and physiotherapy.



AGE: 16+

COURSE DURATION:
Two years (three terms per year)

START DATE: September 2026

HOURS PER WEEK:
Approximately 15 hours per week including all work placement visits.

Three hours per week English Language (ESOL) support until you achieve IELTS 6.5.

ACADEMIC REQUIREMENTS:
You should have completed at least one year of senior high or secondary school with a good level of attainment. We will require your past two years of academic reports.

ENGLISH LANGUAGE REQUIREMENT:
IELTS 5.0 overall with no band below 5.0 or equivalent UKVI-approved English Language certificate.

Students with a high academic performance but with an overall IELTS score of below 5.0 may be offered the opportunity to join one of our English support courses, which will allow them to meet our English entry requirements.

ASSESSMENT METHOD:
Students study real-life, work-based case studies and complete projects and assessments that contribute to achievement against a set of goals.

QUALIFICATIONS GAINED:
Level 3 Extended Diploma.

TUITION FEE: £12,500 per academic year

APPLICATION PROCESS

We accept applications from all over the world, and our International team is here to offer you help and guidance every step of the way.

- TO APPLY:**
- Complete our online International application form.
 - Supply your most recent two years of academic reports.
 - Provide a copy of your passport and birth certificate.

PROCESS: Once we have received the above documents, we will invite you to a video-based interview, which normally takes about 20 minutes. We will ask you about your academic and career ambitions, your course choices, your interests and hobbies, and discuss your Homestay preferences (if applicable).

We will then normally be in a position to give you a conditional offer letter. This letter may contain academic and English language requirements, which you must demonstrate before we can make your offer unconditional.

We will also require payment of a deposit. This sum will be specified in your conditional offer letter.

VISAS: Students from overseas will typically join us after obtaining a study visa. The main types of visa, with a brief explanation, are listed below:

SHORT-TERM STUDENT VISA	STUDENT ROUTE VISA
<p>This type of visa is normally required if you do not have British nationality and are studying a course lasting up to six months.</p> <p>There is no requirement to produce an English language certificate for this type of visa, although you must still satisfy our internal assessment requirements.</p>	<p>This type of visa will be appropriate for you if you plan to join from overseas, do not have a British passport and will be studying a course lasting more than six months (typically on a one or two year course).</p> <p>You will need to supply a valid, UKVI-approved, English language certificate. Our English language requirements can be found on the individual course pages of this brochure.</p> <p>We have a professional team to help you through the visa process.</p>

PRE-ARRIVAL: We will send you some paperwork to complete once we have confirmed your place and will allocate you a suitable Homestay placement.

We offer a complimentary meet-and-greet airport service from Heathrow airport in late August/early-September.

ENROLMENT: We have several days of induction activities during the first week of September, which will fully prepare you for your studies at Brock. You will also get to meet and make friends with other international students during this time.

FEES, SCHOLARSHIPS AND VISAS

Fees

Tuition fees quoted in this prospectus include:

- A full-time programme of study.
- All academic and personal support, including an International Tutorial programme and Student Support Manager.
- Examination entry (including resits).
- English language classes.
- College clubs and society membership.
- Aspire programme for high-achieving students.
- London Heathrow airport pick-up service on specified dates.
- Dedicated Higher Education guidance and specialist Oxford/Cambridge application support.

Please note: additional course costs apply to cover the cost of resources (£50-£80 per course), trips and sporting equipment. All students will be required to pay a non-refundable administration fee of £150 for each academic year.

Homestay accommodation fees

In 2025/26 a variety of homestay accommodation options will be offered, ranging from £8,500 to £9,500.

The College will charge a supplementary fee to cover certain circumstances as follows: special diet (e.g. gluten free) £50 per week, private foster care £50 per week.

Please visit www.brock.ac.uk/homestay for more information.

ZONES	FEE
Zone A	£9,500
Zone B	£9,000*
Zone C	£8,750*
Zone D	£8,500*

*Please note that travel passes may not be available for your first few days at college. You will need to fund your own travel in the meantime.

Independent support fee

Any students not living in accommodation arranged by us are subject to an independent support fee of £500 to cover administration expenses.

Insurance

Please note that our fees do not include any travel/medical insurance. We would encourage you to make your own arrangements for this prior to arrival.

Scholarships

We are pleased to be able to offer a range of International Scholarships. Please contact international@brock.ac.uk for more information.

Visas and immigration advice

As a Sponsor (formerly Tier 4 Sponsor) we are licensed to welcome international students wishing to study in Britain. It is very important you have the correct visa to live and study in the UK. The Government changes its regulations periodically and you must ensure that you are familiar with the terms of your visa. You will be supported throughout the application process by our dedicated immigration specialist.

For further information, visit:

www.gov.uk/government/organisations/uk-visas-and-immigration and www.brock.ac.uk/international

International Student Support Fee for 2026/27

We will apply the following charge to any student joining the College from overseas that qualifies for a fee waiver. This may include British National Overseas students or British students non-resident in the UK for more than three years. If you fall into one of these categories and are also over the age of 19 at the beginning of your course, further fees may apply. Please contact us directly to assess your circumstances.

Fee: £6,500 per year.



CONTACT US

We have a dedicated International team to help you through all stages of your application. Team members will fully prepare you for your arrival in the UK and we also provide all the support you need.

To find out more about the staff who specialise in international education, please visit: www.brock.ac.uk/international/team

You may also contact your local agent for further information about studying with us.

Brockenhurst College
Lyndhurst Road, Brockenhurst, Hampshire, SO42 7ZE

T: +44 (0)1590 625325

T: +44 (0)1590 625555

E: international@brock.ac.uk

www.brock.ac.uk/international

